

Mystery Quilt, Block 6

Materials

- $\frac{1}{8}$ yard medium print
- 8" square dark print
- $\frac{1}{4}$ yard light print

Finished block: 9" square

Quantities are for 44/45"-wide, 100% cotton fabrics.

Measurements include $\frac{1}{4}$ " seam allowances. Sew with right sides together unless otherwise stated.

Cut Fabrics

Cut pieces in the following order.

From medium print, cut:

- 2— $3\frac{1}{8}$ " squares, cutting each in half diagonally for 4 triangles total
- 12— $1\frac{5}{8} \times 2\frac{3}{4}$ " rectangles

From dark print, cut:

- 2— $3\frac{1}{8}$ " squares, cutting each in half diagonally for 4 triangles total
- 1— $2\frac{3}{4}$ " square

From light print, cut:

- 4— $1\frac{5}{8} \times 3\frac{7}{8}$ " rectangles
- 4— $1\frac{5}{8} \times 2\frac{3}{4}$ " rectangles
- 24— $1\frac{5}{8}$ " squares

Assemble Block

1. Sew together a medium print triangle and a dark print triangle to make a triangle-square (Diagram 1). Press seam toward dark print. The triangle-square should be $2\frac{3}{4}$ " square including seam allowances. Repeat to make four triangle-squares total.
2. Referring to Diagram 2, sew a light print $1\frac{5}{8} \times 2\frac{3}{4}$ " strip to a medium print edge of a triangle-square. Add a light print $1\frac{5}{8} \times 3\frac{7}{8}$ " strip to remaining medium print edge of triangle-square to make a corner unit. Press all seams toward strips. The corner unit should be $3\frac{7}{8}$ " square including seam allowances. Repeat to make a second corner unit. Using same pieces but in a different arrangement, repeat to make two reversed corner units.

3. Use a pencil or white dressmaker's chalk to draw a diagonal line on wrong side of each light print $1\frac{5}{8}$ " square.
4. Align a marked light print square with one end of a medium print $1\frac{5}{8} \times 2\frac{3}{4}$ " rectangle (Diagram 3; note direction of drawn line). Sew on marked line. Trim excess, leaving $\frac{1}{4}$ " seam allowance. Press attached triangle open. Align a second marked light print square with remaining end of medium print rectangle. Stitch, trim, and press as before to make a Flying Geese unit. The unit should be $2\frac{3}{4} \times 1\frac{5}{8}$ " including seam allowances. Repeat to make 12 Flying Geese units total.

5. Join three Flying Geese units in a row to make a Flying Geese trio (Diagram 4). Press seams toward bottom Flying Geese unit. Repeat to make four Flying Geese trios total.
6. Referring to Diagram 5, lay out corner units, reversed corner units, Flying Geese trios, and grayprint $2\frac{3}{4}$ " square in three rows. Sew together pieces in each row. Press seams away from Flying Geese trios. Join rows to make a block. Press seams in one direction. The block should be $9\frac{1}{2}$ " square including seam allowances.

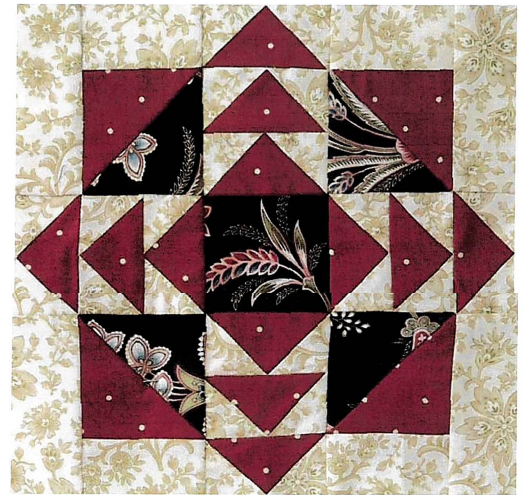
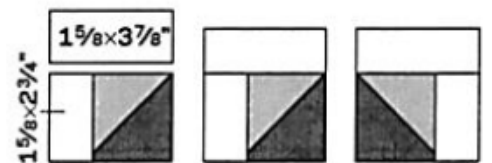


DIAGRAM 1



Corner Unit

Reversed Corner Unit

DIAGRAM 2



DIAGRAM 3



DIAGRAM 4

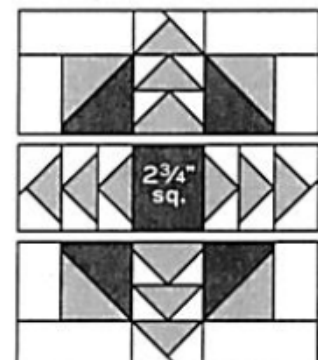


DIAGRAM 5

Mystery Quilt, Block 7

Materials

- 9x22" piece (fat eighth) each of dark print, light print, and medium print

Finished block: 9" square

Quantities are for 100% cotton fabrics.

Measurements include $\frac{1}{4}$ " seam allowances. Sew with right sides together unless otherwise stated.

Cut Fabrics

Cut pieces in the following order.

From dark print, cut:

- 2— $3\frac{1}{2}$ " squares, cutting each diagonally twice in an X for 8 triangles total
- 8— $1\frac{5}{8}$ " squares

From light print, cut:

- 1— $3\frac{1}{2}$ " square, cutting it diagonally twice in an X for 4 triangles total
- 4— $2\frac{3}{4}$ " squares
- 8— $1\frac{5}{8}\times 2\frac{3}{4}$ " rectangles
- 8— $1\frac{5}{8}$ " squares

From medium print, cut:

- 1— $3\frac{1}{2}$ " square, cutting it diagonally twice in an X for 4 triangles total
- 1— $2\frac{3}{4}$ " square
- 4— $1\frac{5}{8}\times 2\frac{3}{4}$ " rectangles
- 4— $1\frac{5}{8}$ " squares

Assemble Corner Units

1. Use a pencil or a white dressmaker's pencil to mark a diagonal line on wrong side of each dark print $1\frac{5}{8}$ " square.
2. Align a marked dark print $1\frac{5}{8}$ " square with one end of a light print $1\frac{5}{8}\times 2\frac{3}{4}$ " rectangle (Diagram 1; note direction of marked line). Sew on marked line. Trim excess fabric, leaving $\frac{1}{4}$ " seam allowance. Press open attached triangle, pressing seam toward dark print, to make a rectangle unit. The unit should still be $1\frac{5}{8}\times 2\frac{3}{4}$ " including seam allowances. Repeat to make four rectangle units total.

3. Repeat Step 2 with marked line of dark print square running in opposite direction to make a reversed rectangle unit (Diagram 2). Repeat to make four reversed rectangle units total.
4. Referring to Diagram 3, sew together a light print $2\frac{3}{4}$ " square, rectangle unit, reversed rectangle unit, and medium print $1\frac{5}{8}$ " square in pairs. Press seams toward rectangle units. Join pairs to make a corner unit. Press seam toward top pair. The unit should be $3\frac{7}{8}$ " square including seam allowances. Repeat to make four corner units total.

Assemble Hourglass and Flying Geese Units

1. Referring to Diagram 4, join one light print triangle, two dark print triangles, and one medium print triangle in pairs. Press seams toward dark print. Join pairs to make an hourglass unit; press seam in one direction. The hourglass unit should be $2\frac{3}{4}$ " square including seam allowances. Repeat to make four hourglass units total.
2. Use a pencil to mark a diagonal line on wrong sides of light print $1\frac{5}{8}$ " squares.
3. Align a marked light print square with one end of a medium print $1\frac{5}{8}\times 2\frac{3}{4}$ " rectangle (Diagram 5; note direction of marked line). Sew on marked line. Trim excess fabric, leaving $\frac{1}{4}$ " seam allowance. Press open attached triangle, pressing toward light print. In same manner, add a second marked light print square to other end of rectangle to make a Flying Geese unit. Press as before. The unit should be $2\frac{3}{4}\times 1\frac{5}{8}$ " including seam allowances. Repeat to make four Flying Geese units total.



Assemble Block

1. Referring to Diagram 6, sew a Flying Geese unit to medium print edge of an hourglass unit to make a star point unit. Press seam toward hourglass unit. Repeat to make four star point units total.
2. Referring to Block Assembly Diagram, lay out corner units, star point units, and medium print $2\frac{3}{4}$ " square in three horizontal rows. Sew together pieces in each row. Press seams away from star point units. Join rows to make a block. Press seams in one direction. The block should be $9\frac{1}{2}$ " square including seam allowances.

Mystery Quilt, Block 7

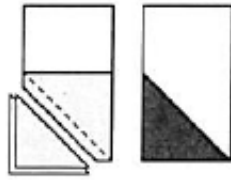


DIAGRAM 1



DIAGRAM 2

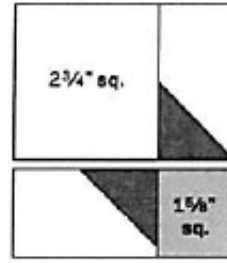


DIAGRAM 3

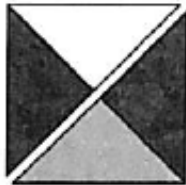


DIAGRAM 4

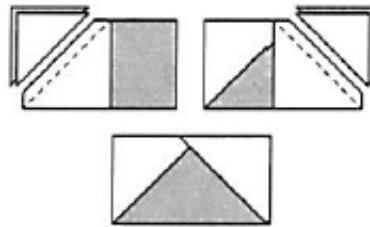


DIAGRAM 5

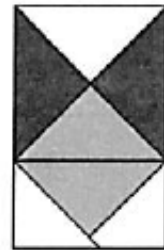
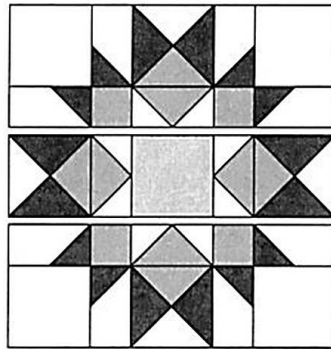


DIAGRAM 6



BLOCK ASSEMBLY DIAGRAM